

Everett Community College
Learning Resource Center —
20 February 2020



CAMPUS
"MEADOW"

FFE 86

LEARNING RESOURCE CENTER

EXIT

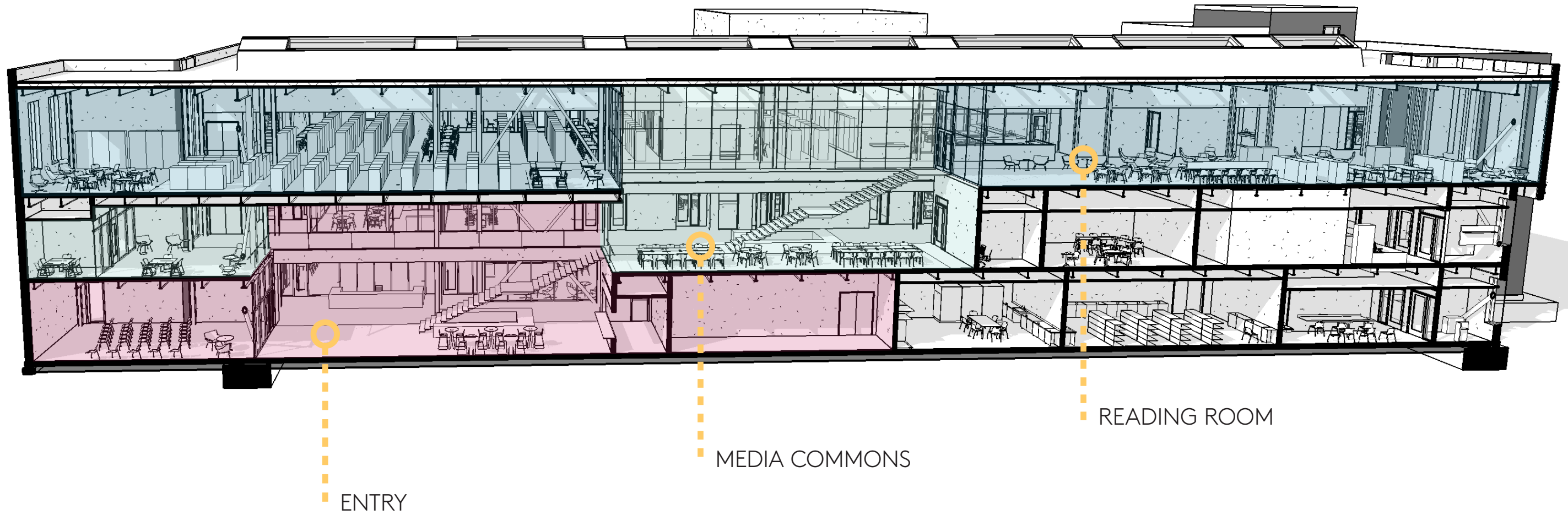
EXIT

TRASH

TRANSFORMER

LOADING

SITE PLAN



ENTRY

MEDIA COMMONS

READING ROOM

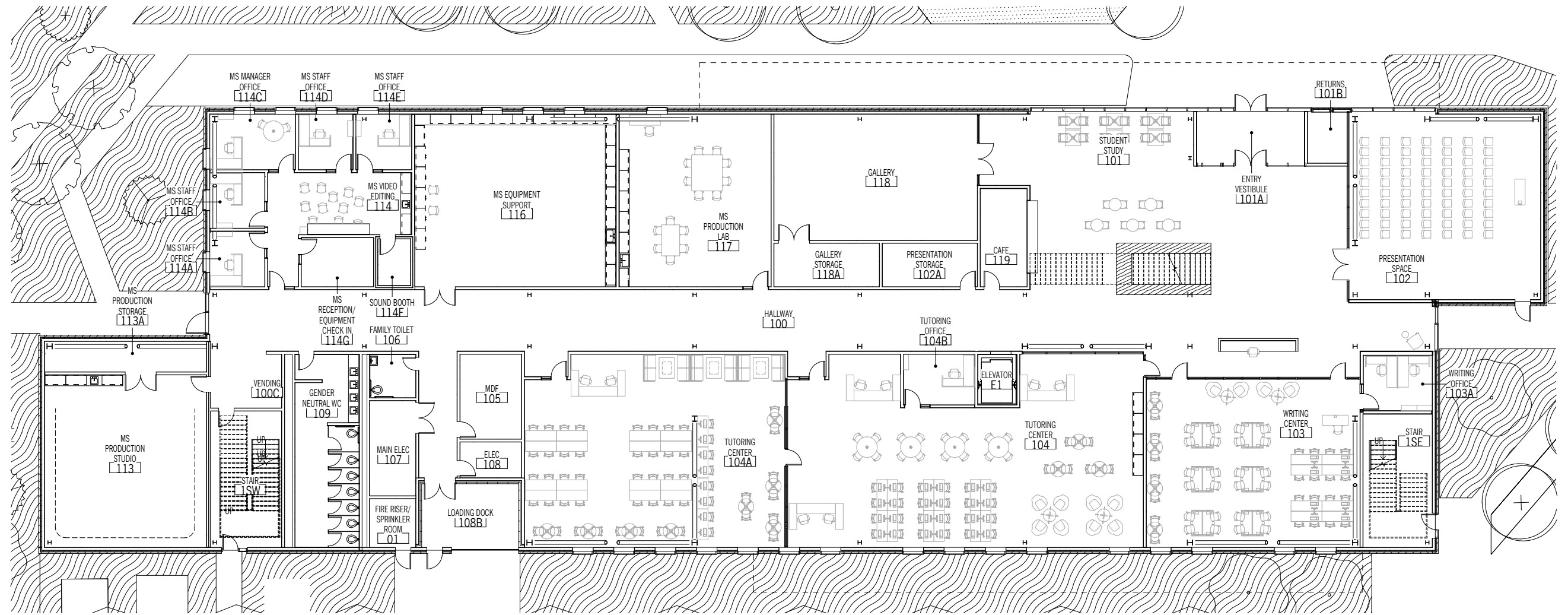
SECTION PERSPECTIVE



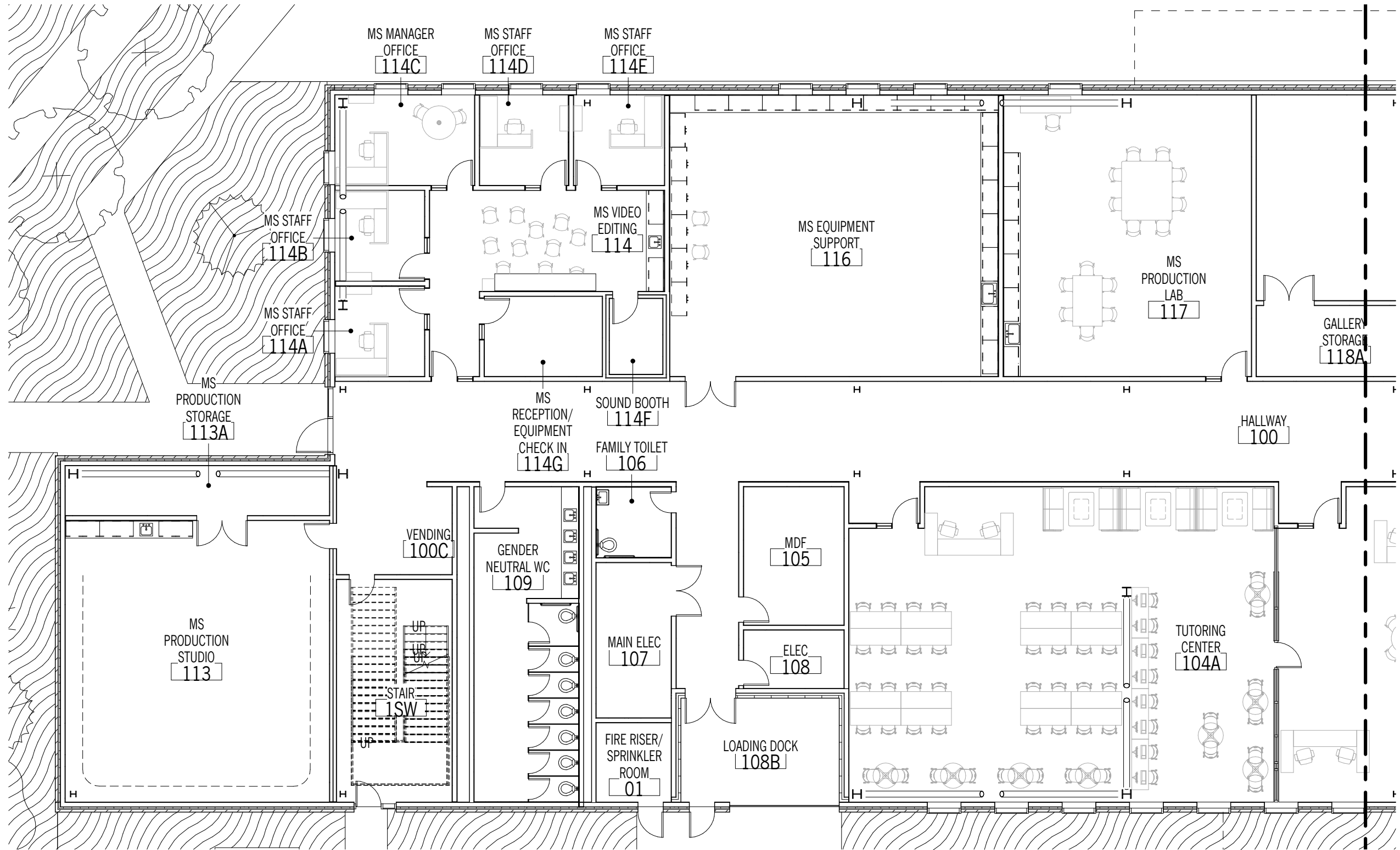
EAST

Floor Plans—

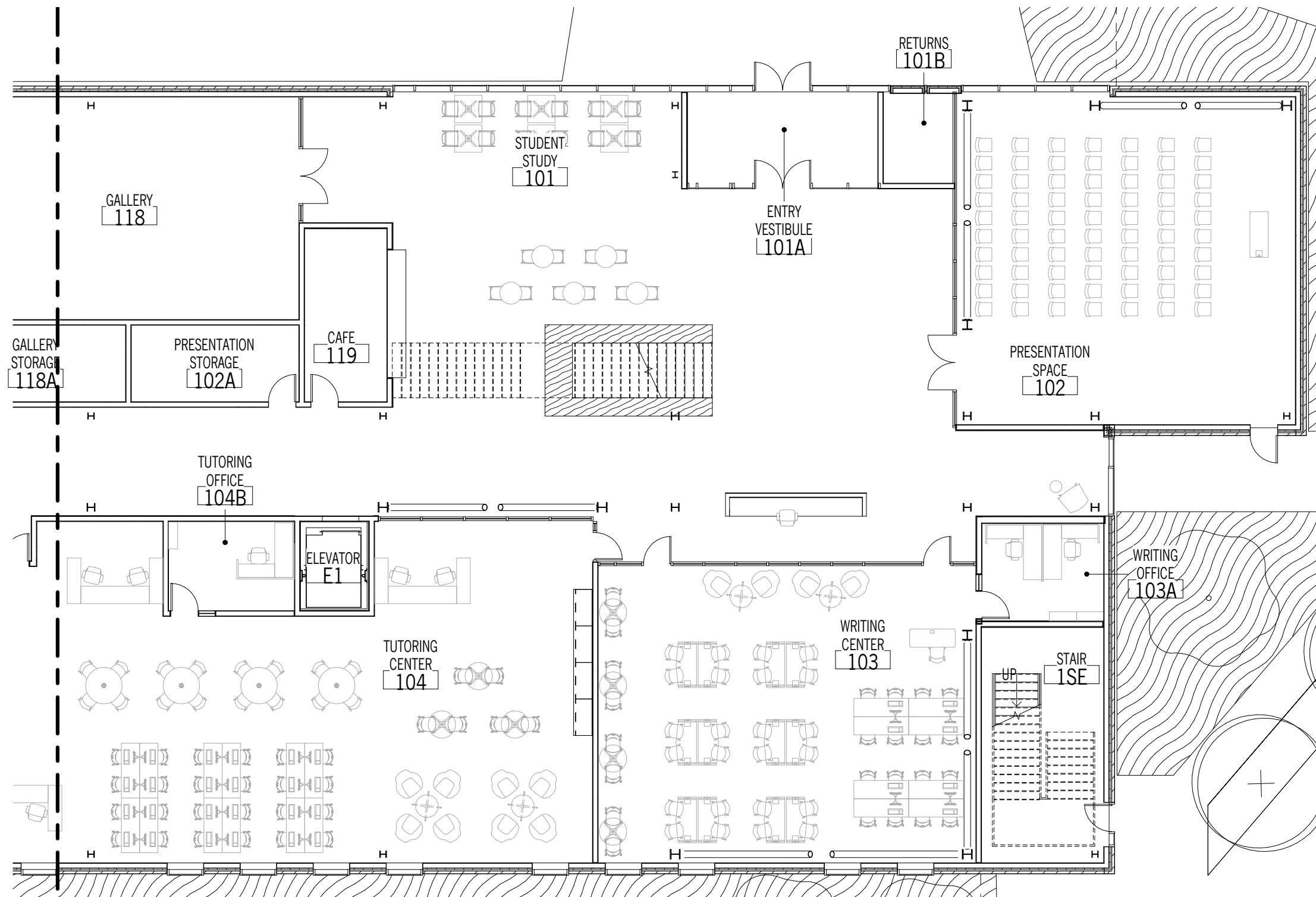
| USE | EXISTING NSF | PREDESIGN NSF | 100% SD NSF | 50% DD NSF |
|-----------------------------------|---------------------|----------------------|--------------------|-------------------|
| Collections | 5,875 | 6,500 | 6,900 | 7,100 |
| Reading Room | 1,092 | 4,040 | 3,600 | 3,570 |
| Student Study | 5,841 | 7,610 | 5,213 | 7,030 |
| CTT Suite & Workspace | NA | 1,960 | 2,200 | 1,900 |
| Tutoring and Writing Centers | 5,035 | 5,580 | 5,870 | 5,800 |
| Classroom, Presentation & Gallery | 1,092 | 4,050 | 4,800 | 5,010 |
| Media Commons | 481 | 5,520 | 5,100 | 6,775 |
| Media Services | 4,161 | 7,540 | 4,500 | 4,725 |
| Staff & Support | 2,679 | 4,320 | 3,200 | 3,200 |
| Technical Services | NA | 1,460 | 1,025 | 1,200 |
| TOTAL NSF | 26,256 | 48,580 | 43,819 | 47,937 |
| TOTAL GSF | NA | 70,000 | 62,247 | 63,933 |



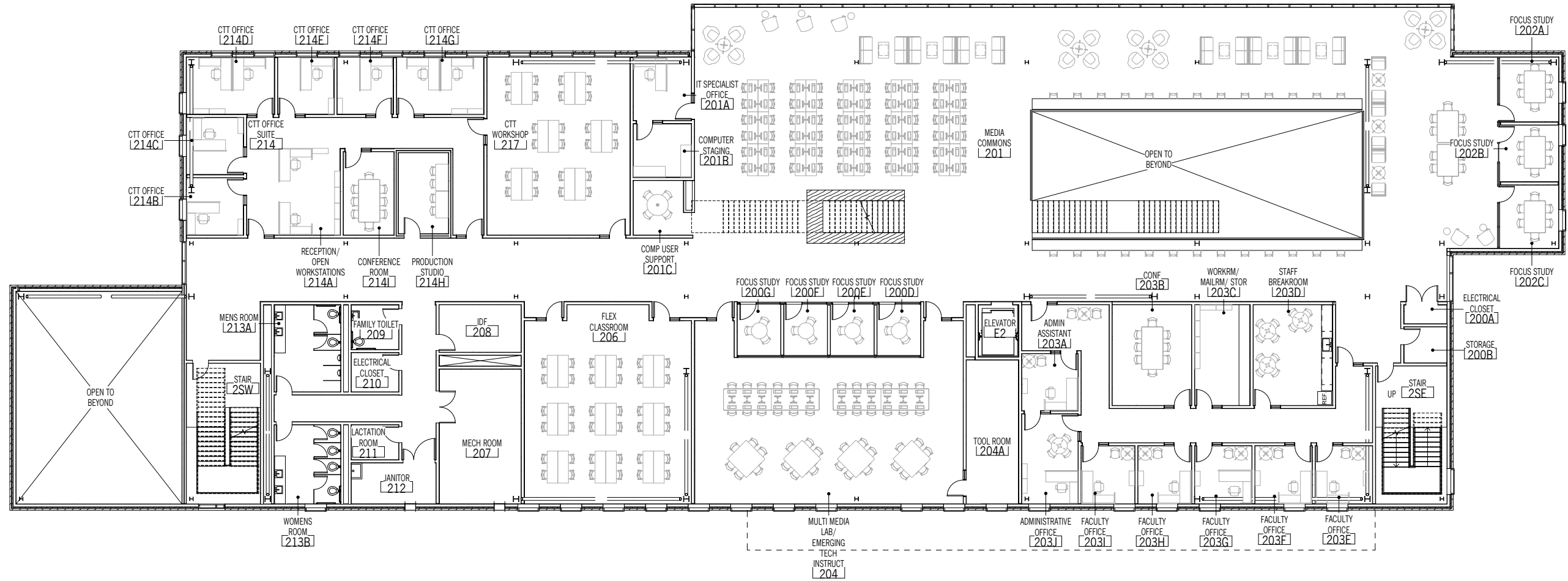
GROUND LEVEL



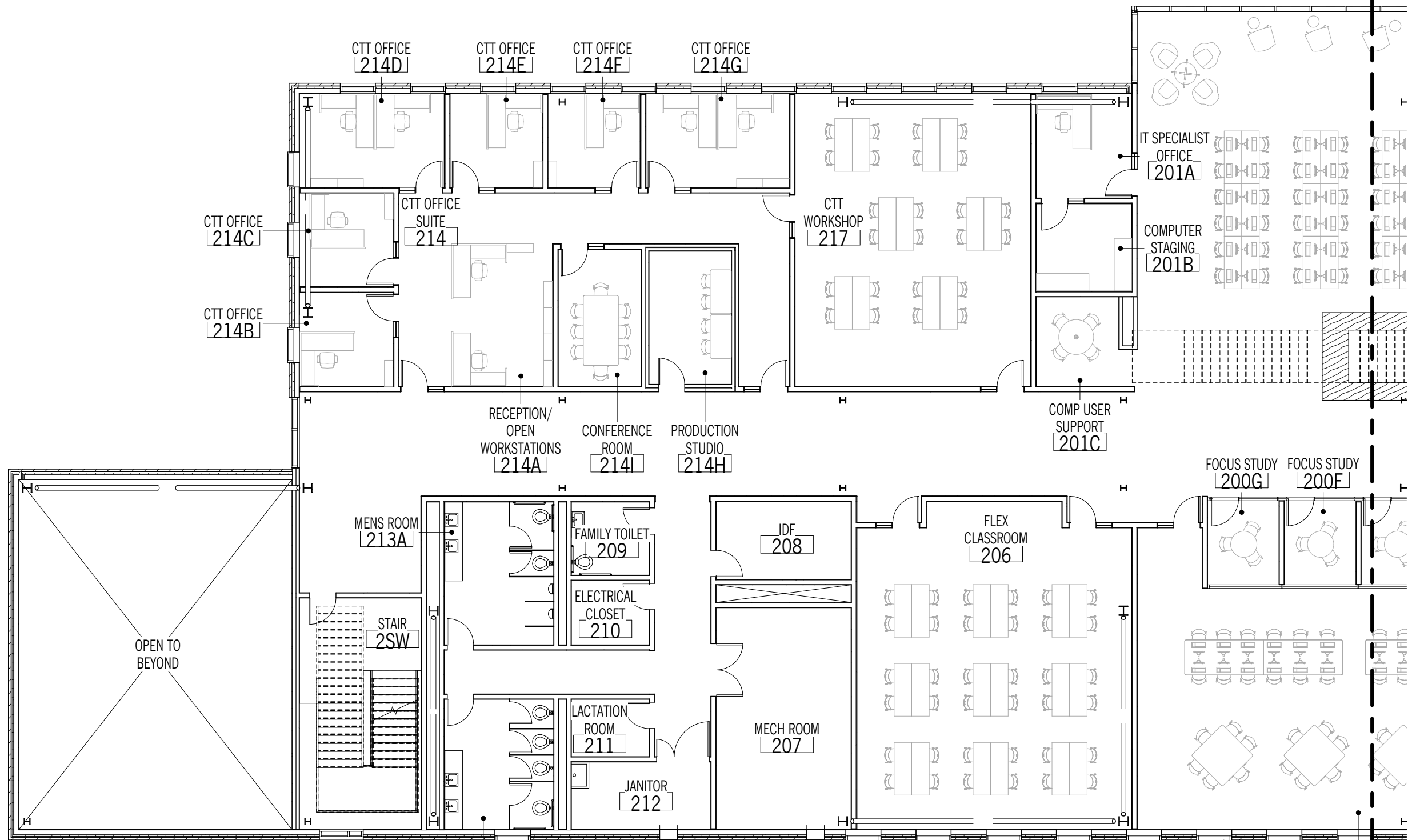
GROUND LEVEL - WEST



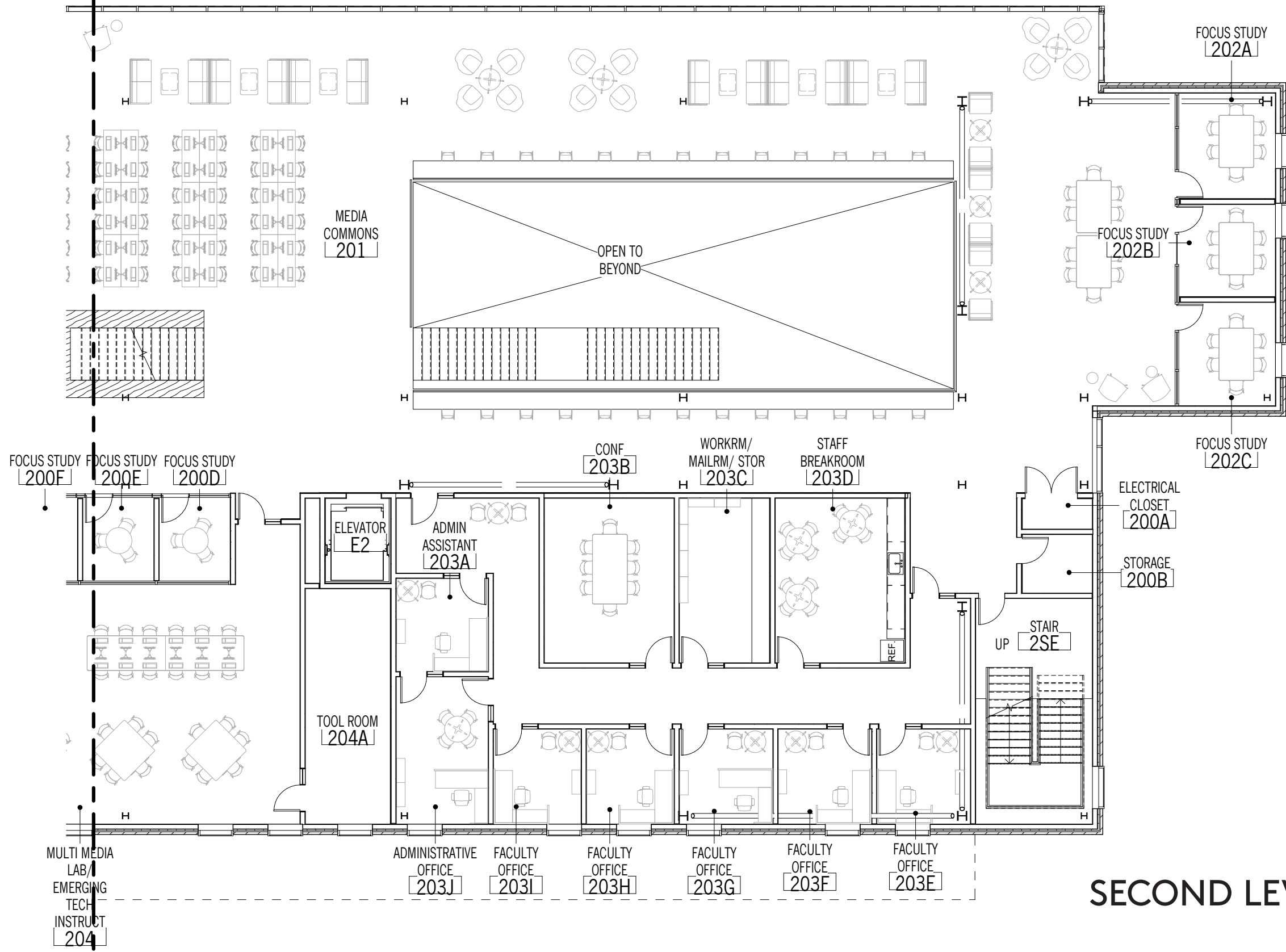
GROUND LEVEL - EAST



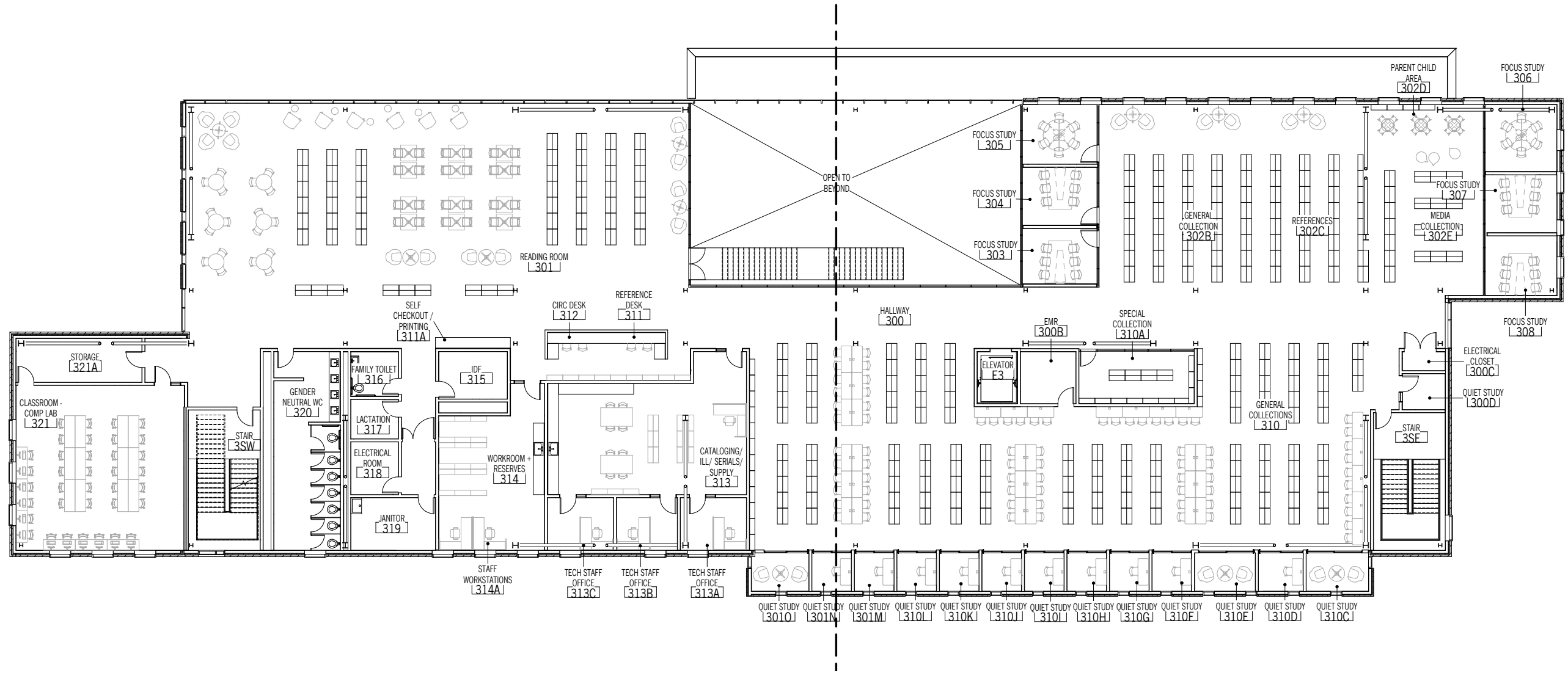
SECOND LEVEL



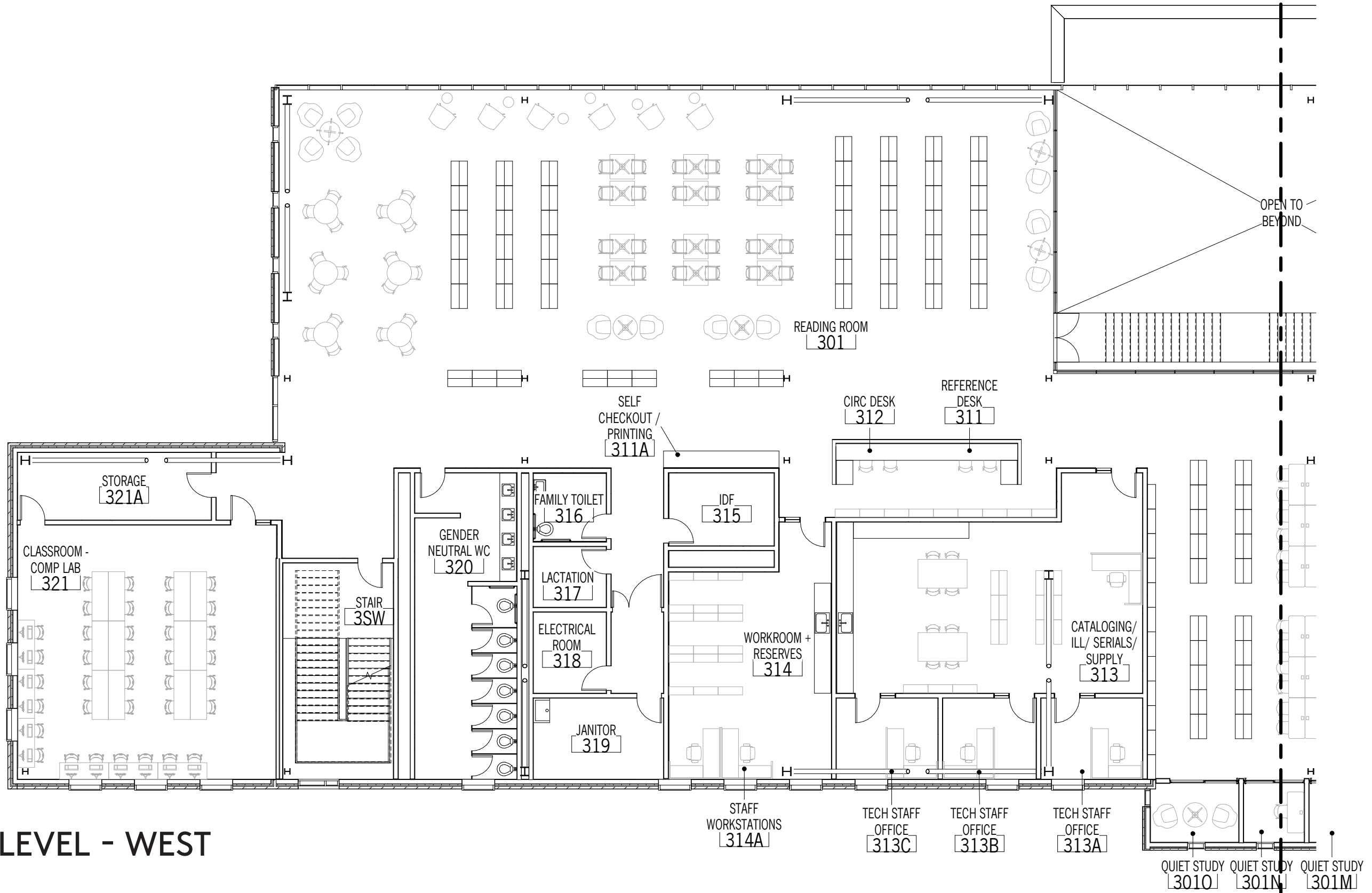
SECOND LEVEL - WEST



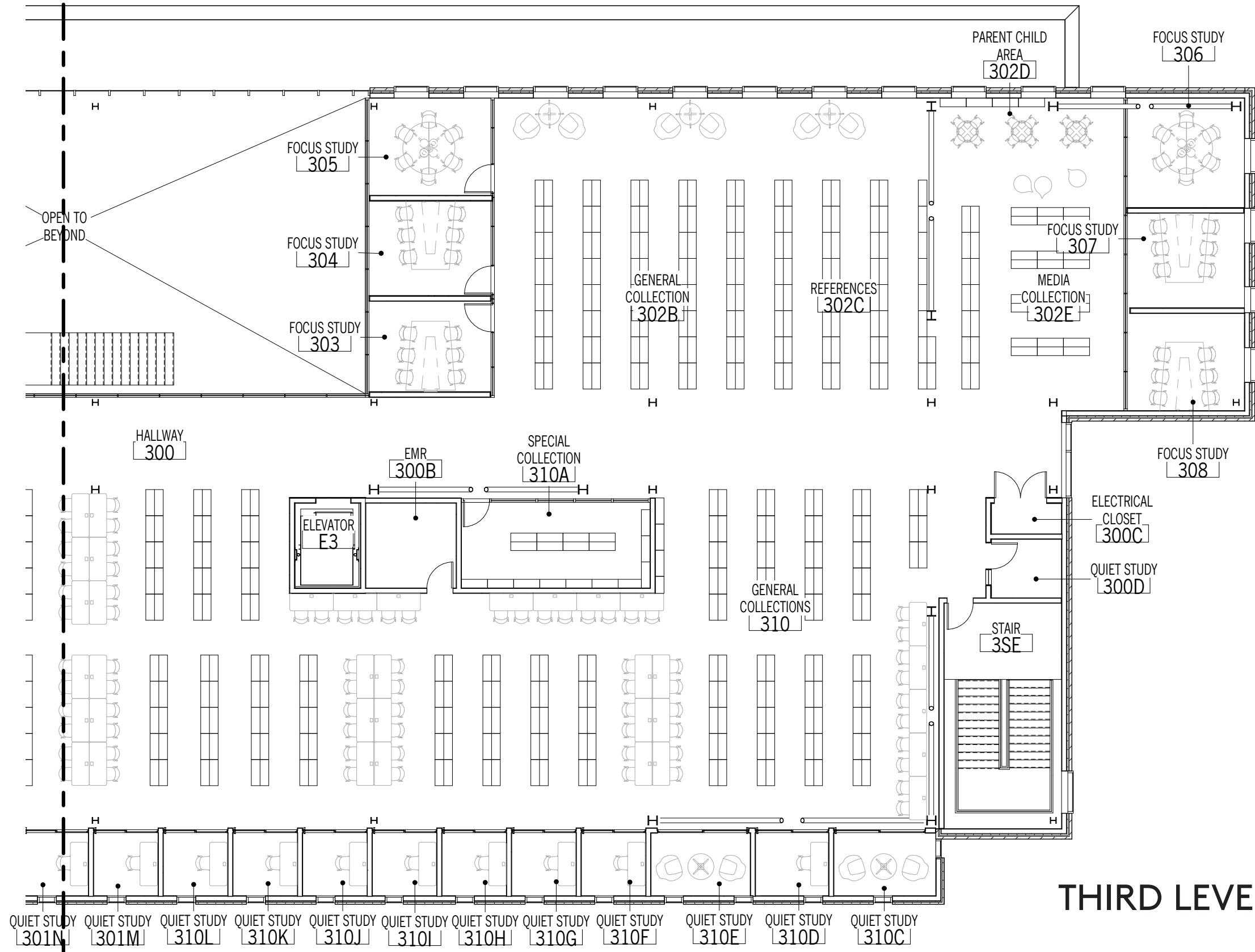
SECOND LEVEL - EAST



THIRD LEVEL



THIRD LEVEL - WEST



THIRD LEVEL - EAST

RENTERS—



Washington State University Everett
Washington State University



NORTH



WEST



SOUTHWEST



NORTHEAST

Milestone Schedule—

| PHASE & MILESTONE | DATES | REMARKS | EVCC PARTICIPANTS |
|--|--------------|----------------------------------|---|
| DESIGN DEVELOPMENT (DD) | | | |
| 50% design presentation | 20 Feb | Design progress overview | Steering committee |
| 90% design presentation | 12 Mar | Design update, interiors focused | Steering committee |
| 100% DD milestone | 17 Mar | End of phase owner review | Steering committee |
| CONSTRUCTION DOCUMENTATION (CD) | | | |
| Interior meetings | TBD | finishes & furniture | Steering committee & end users |
| 50% CD technical systems workshop | 28 May | Site & building systems review | Facilities staff, steering committee |
| Building permit submittal milestone | 11 June | | |
| 90% CD owner review period | 21 Sep | | DES, facilities staff, steering committee |
| 100% CD phase milestone | 30 Oct | | |