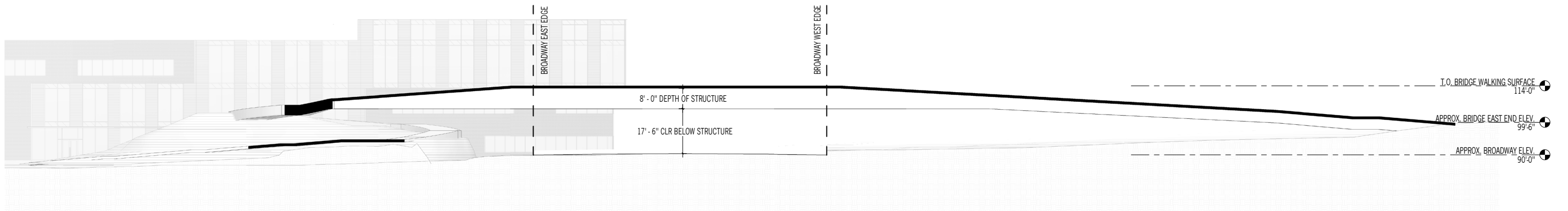
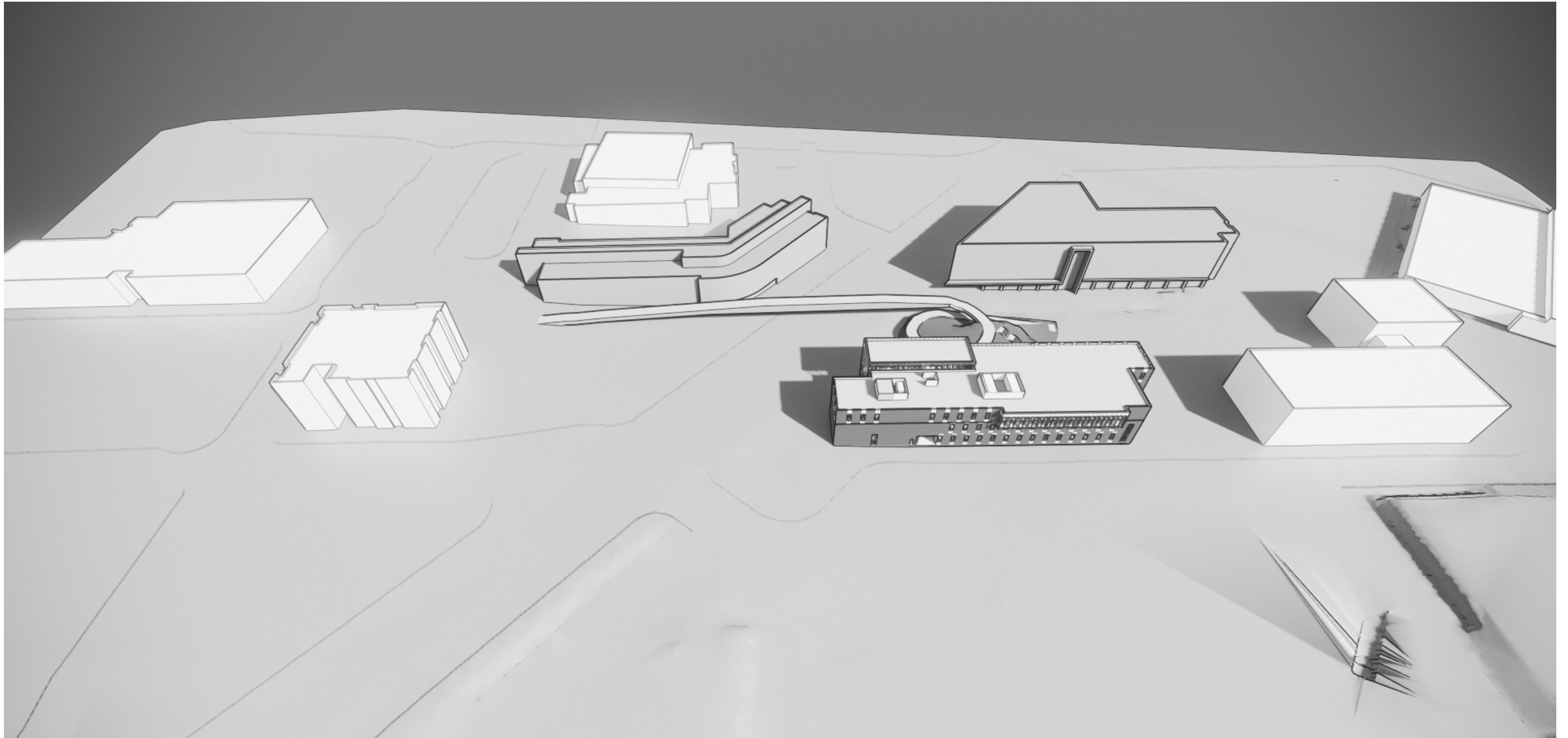


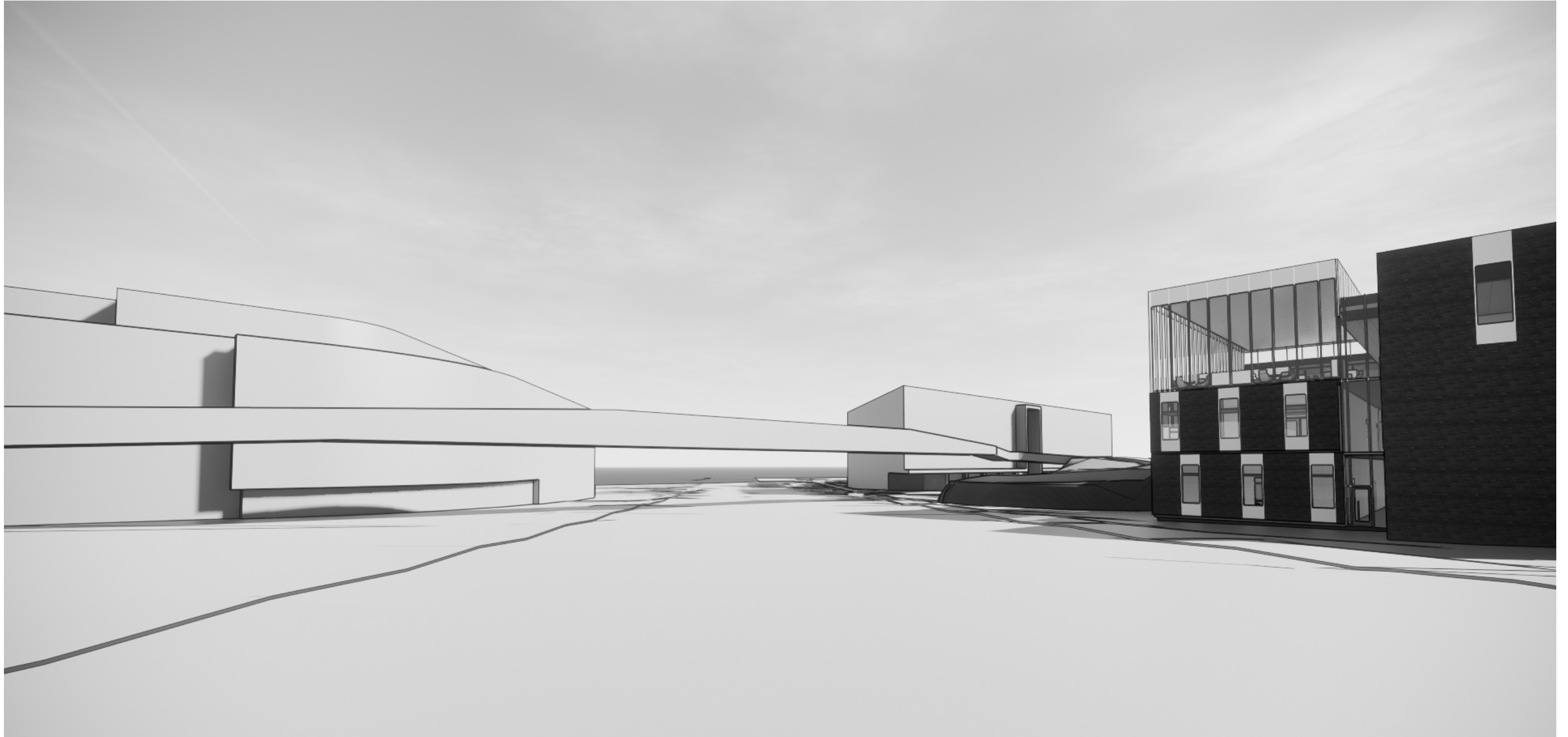
SITE PLAN



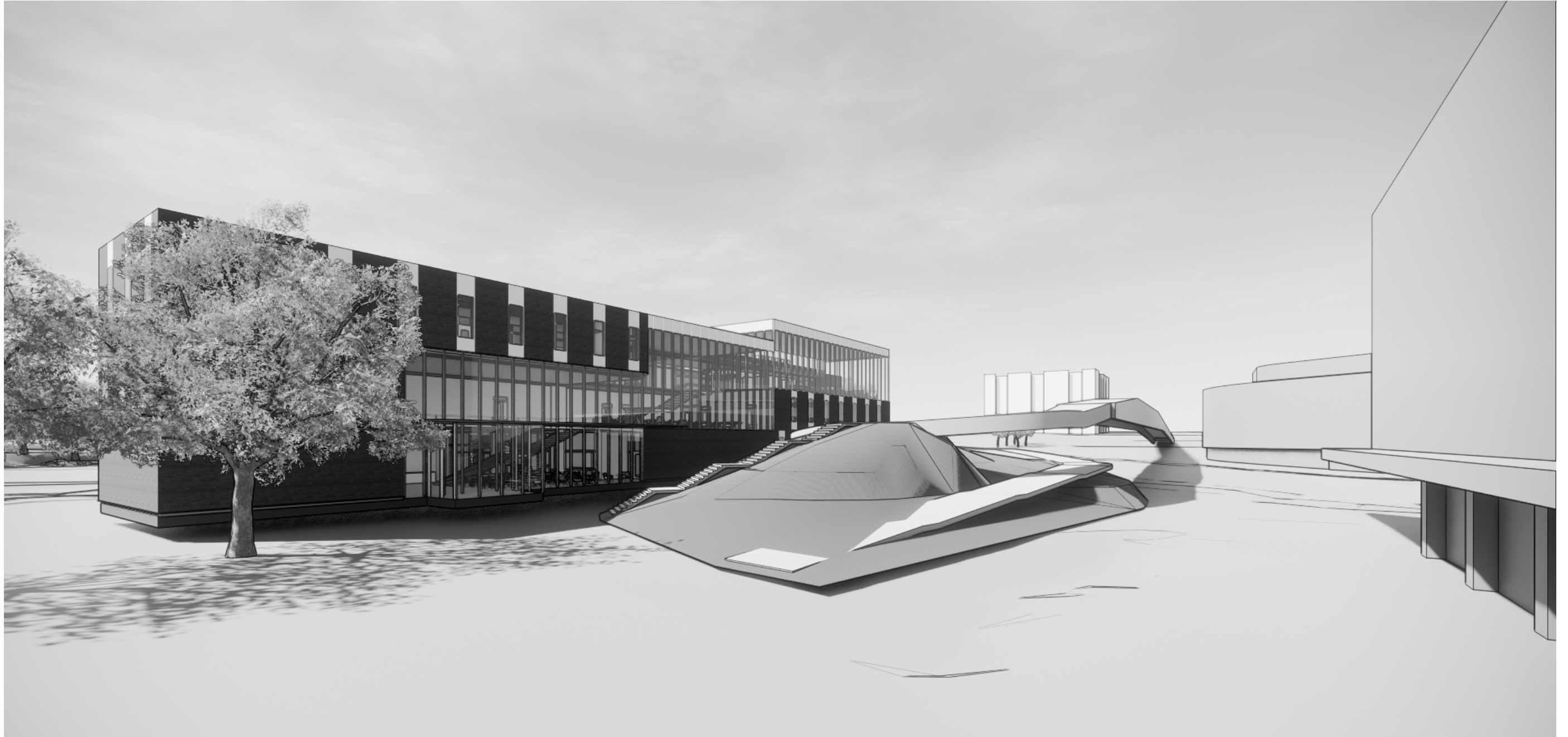
SECTION



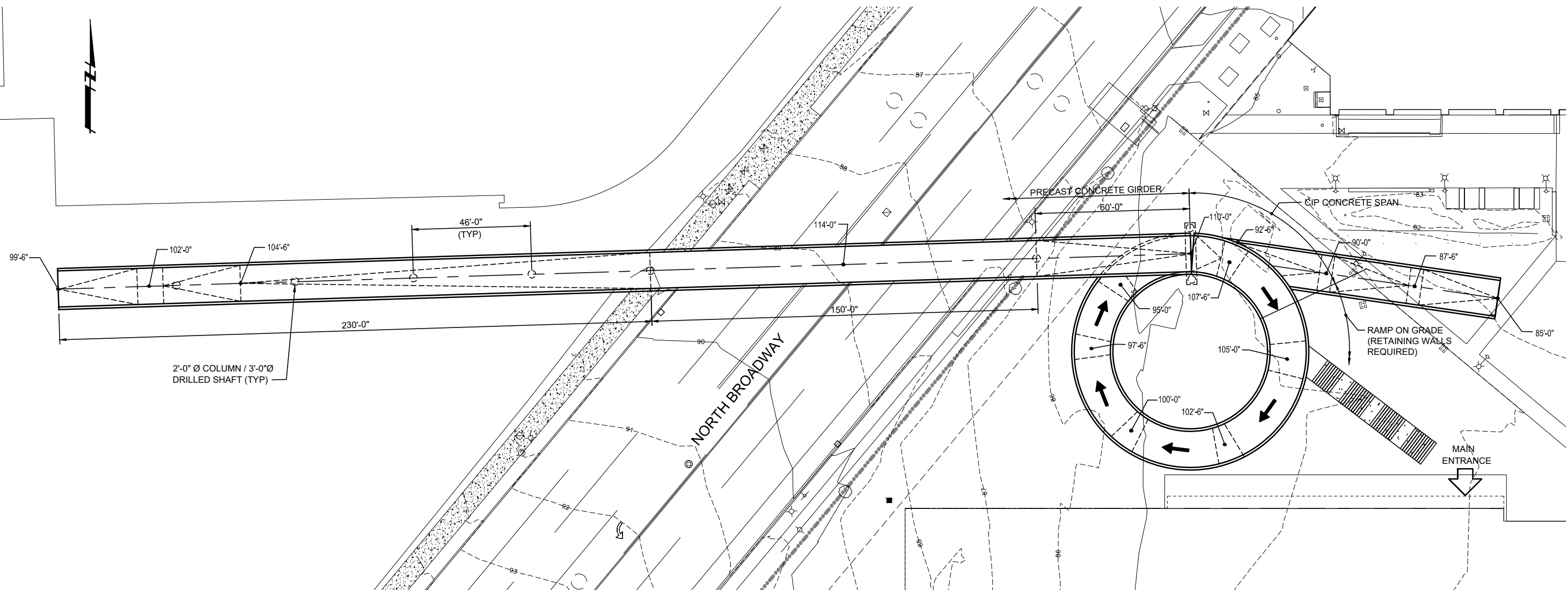
BIRDSEYE



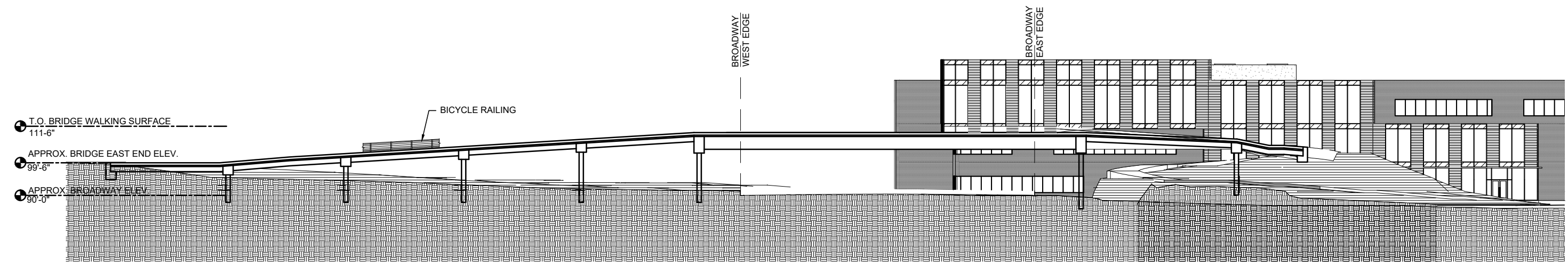
N. BROADWAY LOOKING SOUTH



NORTHEAST LOOKING WEST



PEDESTRIAN BRIDGE PLAN



PEDESTRIAN BRIDGE ELEVATION
REFLECTED VIEW

P:\2019\2019005 - City of Everett Ped Bridge Study\000 CAD\010 Drawings\Structure\Sheet\B2 - BRIDGE CIP 2.dwg\TAB1 modified by gipman on Jan 28, 2020 - 18:59



BELLEVUE OFFICE:
365 - 118th AVE. SE, STE 100
BELLEVUE, WA 98005
WWW.TRANTECHENG.COM
PH: 425-453-5545
FAX: 425-453-6779

DATE:	ISSUED / REVISED	BY:



Everett Community College
Learning Resource Center
2000 Tower Street
Everett, WA 98201

EVERETT COMMUNITY COLLEGE PEDESTRIAN BRIDGE
BRIDGE PLAN & ELEVATION

PROJECT NUMBER 2019005
SHEET B2
PAGE 2 OF 3