



# Team Cats

Kit Apse, Nalin Gada, Dan Le, Rene Kratz, Hannah Lovett

# Introductions



Nalin Gada,  
Fiscal Analyst



Dan Le,  
Young Adult Navigator



Hannah Lovett,  
ELearning Program  
Specialist



Kit Apsel,  
Program Specialist



Rene Kratz,  
Biology Faculty

# A Solid Foundation is Essential

## Our Mentor

Michael's Words of Wisdom:

- ▶ Deliverable product
- ▶ Client buy-in
- ▶ Sustainable

## Setting Group Norms



Michael Schroeder



# Our Client

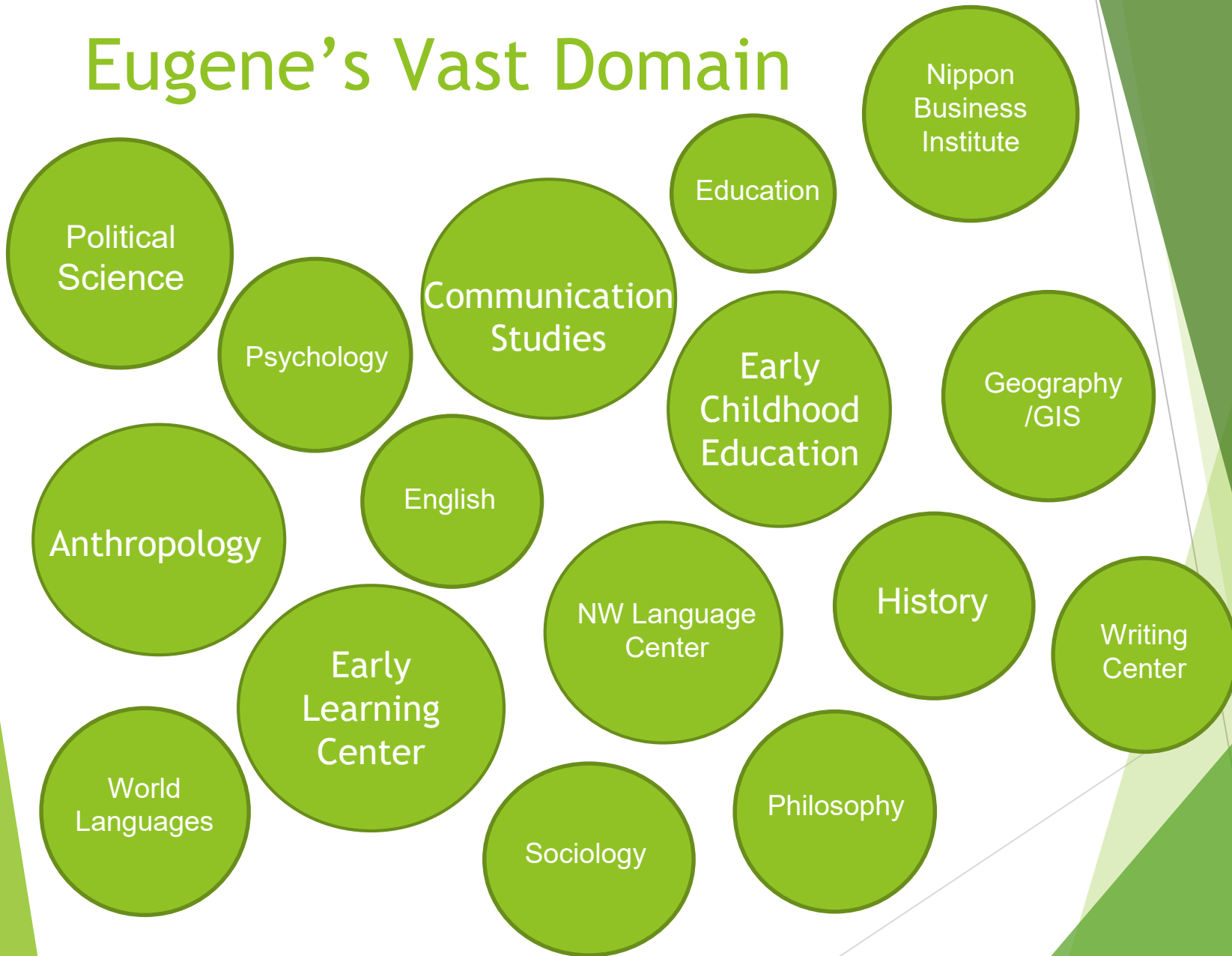
Eugene McAvoy, Dean of  
Communication and Social  
Sciences



## Eugene's 'Why'

- School was a safe place and college changed his life.
- He wants to contribute to EvCC being a safe place that can transform lives.

# Eugene's Vast Domain



# Eugene's Problem Statement

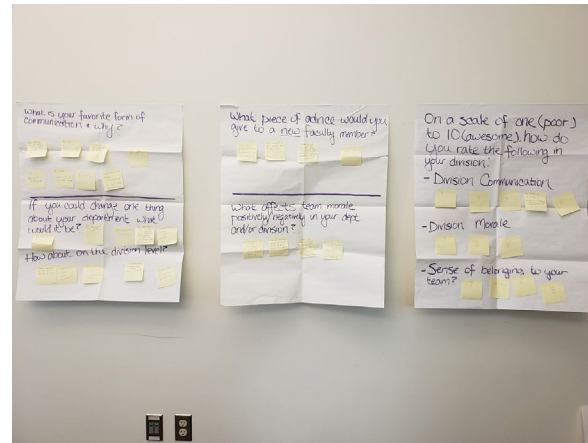
Lack of:

- ▶ Sense of community
- ▶ Sense of belonging
- ▶ Sense of meaningful voice
- ▶ Difficulty in clear and frequent communication

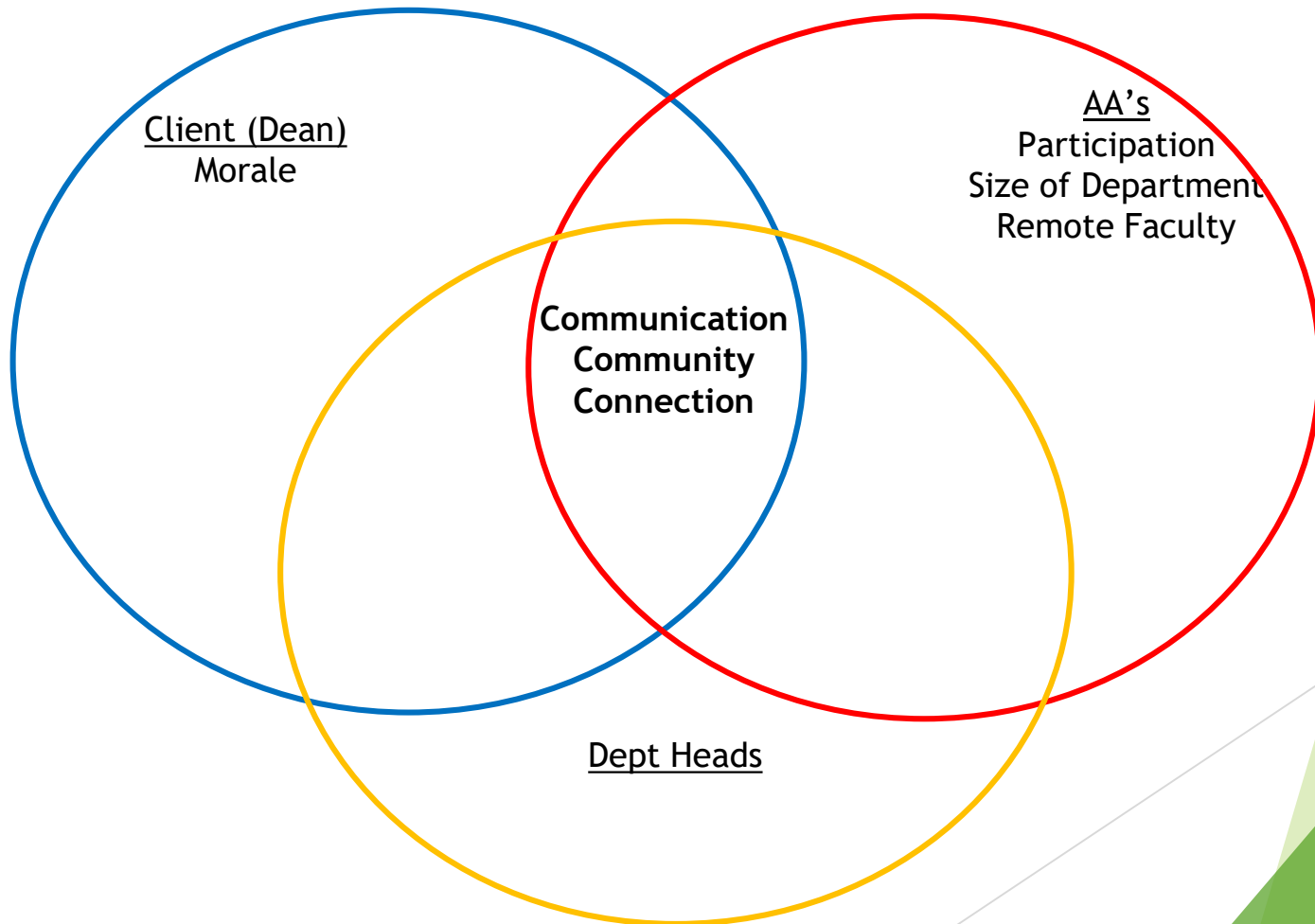
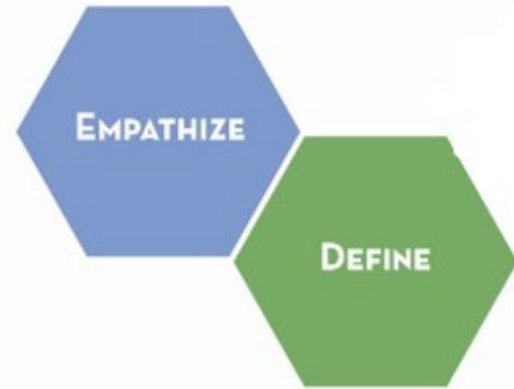


## Stakeholders

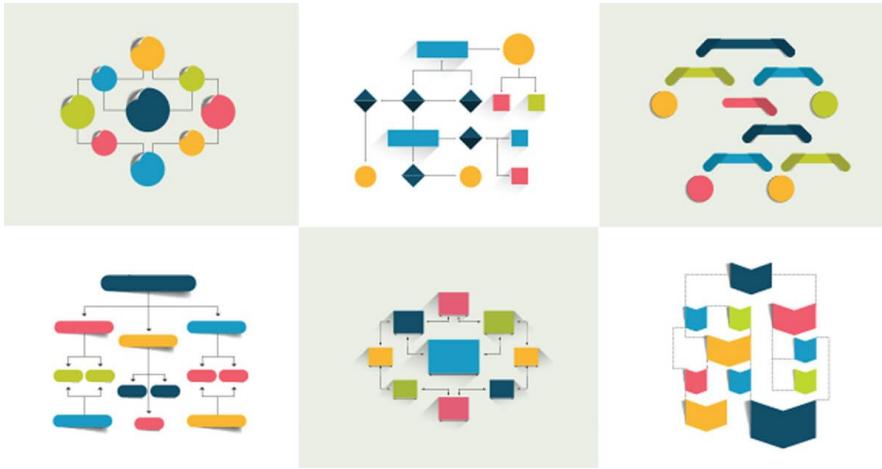
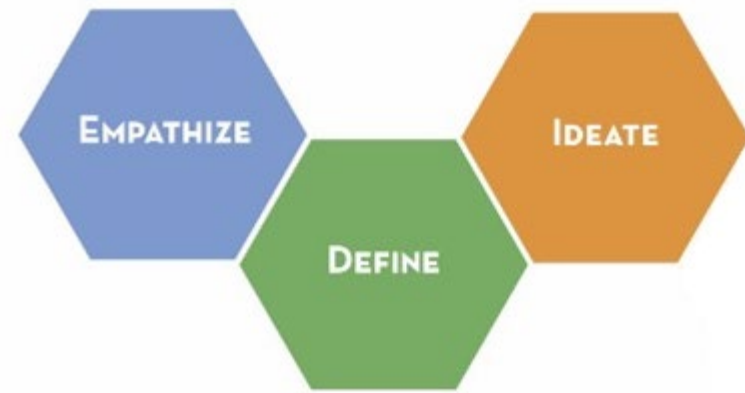
- ▶ Cathie Wamsley
- ▶ Khou Moua
- ▶ Department Heads
- ▶ Communication and Social Sciences Faculty & Staff



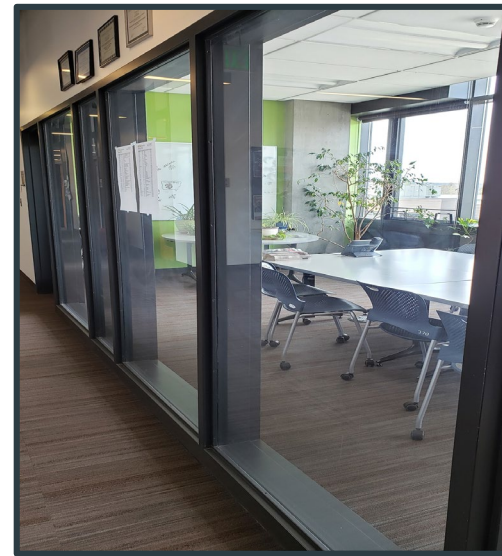
# Empathize & Define



# Ideate - Our Projects



Organizational Chart



Breakroom, Fish Bowl



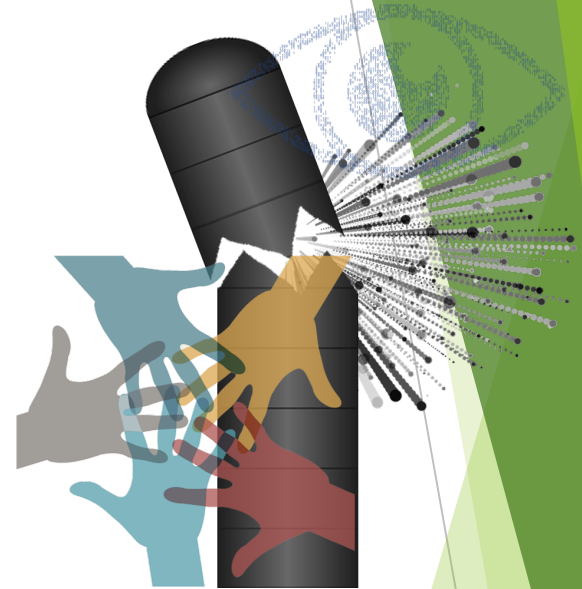
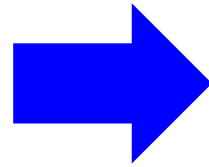
# Game Plan - Organizational Chart

Google

How to breakdown silos|

Google Search

I'm Feeling Lucky



## Goals:

- Connect a face to the name
- Know the team (division)  
beyond the team (department)
- Include off-site faculty



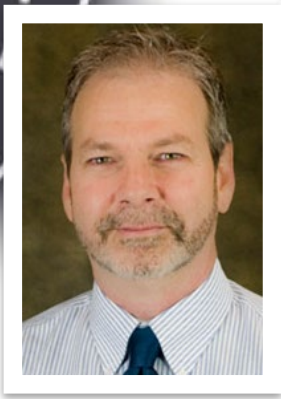
Lucidchart



Exploration of Software Peaks



\*[Image of getting Faculty photos & photo releases]



**START HERE!** Quest Giver Eugene



Many Drafts and Edits..

# COMMUNICATIONS AND SOCIAL SCIENCES DIVISION

## COMMUNICATION STUDIES

Faculty members include: Sandra Davis, Anna Marie Latham, Christopher Loomis, Mary Dickinson, Mark Smith, and Jeff Smith.

## WORLD LANGUAGES

Faculty members include: Peter Alan Frantz, David Brown, James Paul, Lisa Brown, and others.

## ENGLISH

Faculty members include: Linda Berlin, David Brown, Keith Gandy, Gary Smith, and many others.

## ANTHROPOLOGY

Faculty members include: Christine Williams, Christine Williams, and others.

## NIPPON BUSINESS INSTITUTE (NBI)

NBI Faculty

## ADMINISTRATIVE STAFF

Administrative Staff

## WRITING CENTER

Writing Center

## EARLY LEARNING CENTER

Faculty members include: Dawn Wilson, and others.

## SOCIAL SCIENCES

Faculty members include: David Brown, and many others.

## EDUCATION

Faculty members include: and others.

## EARLY CHILDHOOD EDUCATION

Faculty members include: and others.

# The Breakdown on the Break Room

- Less conference room feel
  - window film for privacy
  - different furniture
- Reduce the plants
- More coffee house vibe, something organic
- De-Silo
- Sustainable



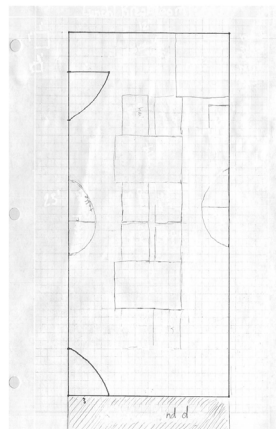
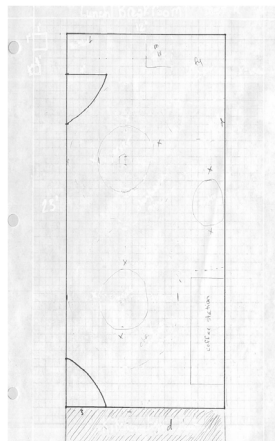
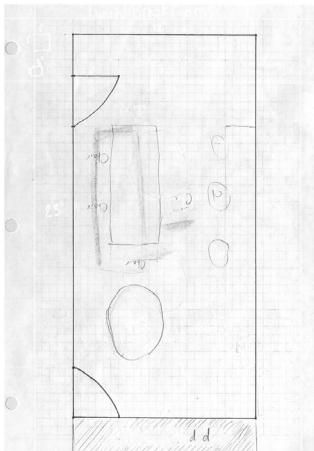


# Game Plan - Break Room

## Fish Bowl Re-Imagined

### Phase 1:

- Designing the space
- Seeking funds and authorization
- Cleaning & Re-Organizing





# Game Plan - Have Wheels Will Travel

- World Language Cooking Classes
- Lunch
- Staff hangout
- Book Nook
- Must retain or increase the amount of seating

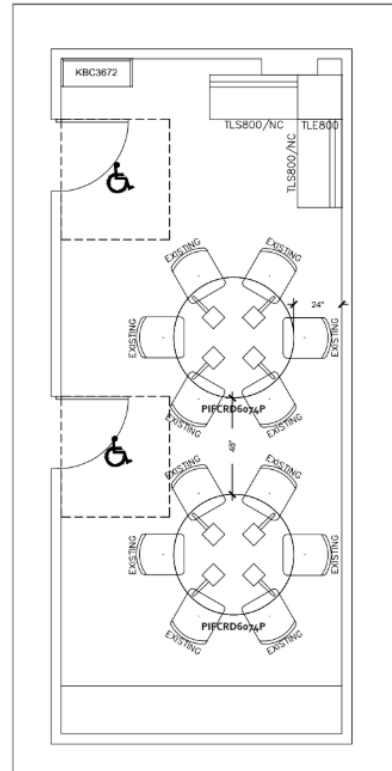
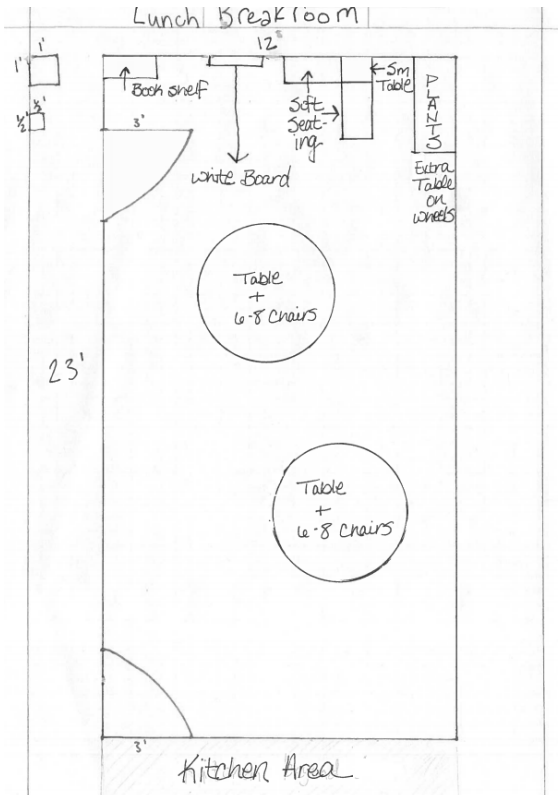


# The Road Blocks

- Plants
- Funding
- Limited resources
- State & Federal guidelines
- More plants
- Working with a big community
- Did we say there were some plants?!



# The Big Ask



workpointe

SEATTLE PORTLAND SPOKANE

Everett Community College  
Rainier Hall / Floor 3 / Room 312  
Everett, WA

LAYOUT

DWG PATH: C:\21588\_SG1\_BGCC\_904\_P03\_0m312.dwg

DRAWN BY	KAP
DATE	4/18/2019
CHECKED BY	
SCALE	NTS
REVISIONS:	
DATE	DESCRIPTION
APPROVED BY/TITLE	
X	
DATE	

Floor plans

Special Thanks to Molly B and Pat S.

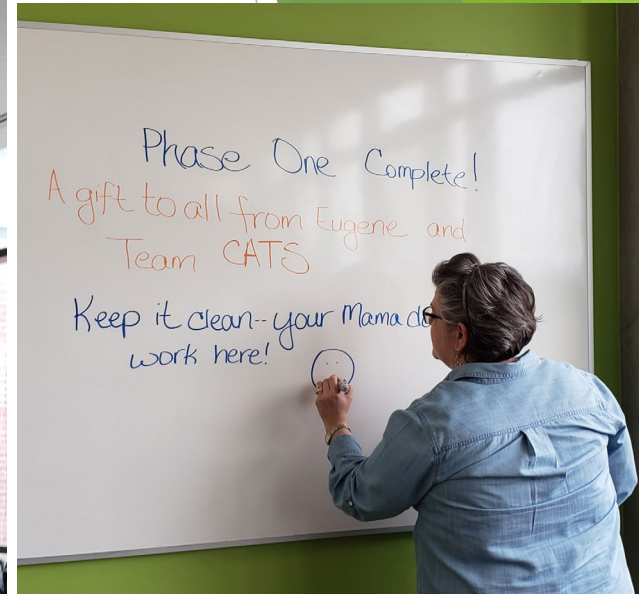
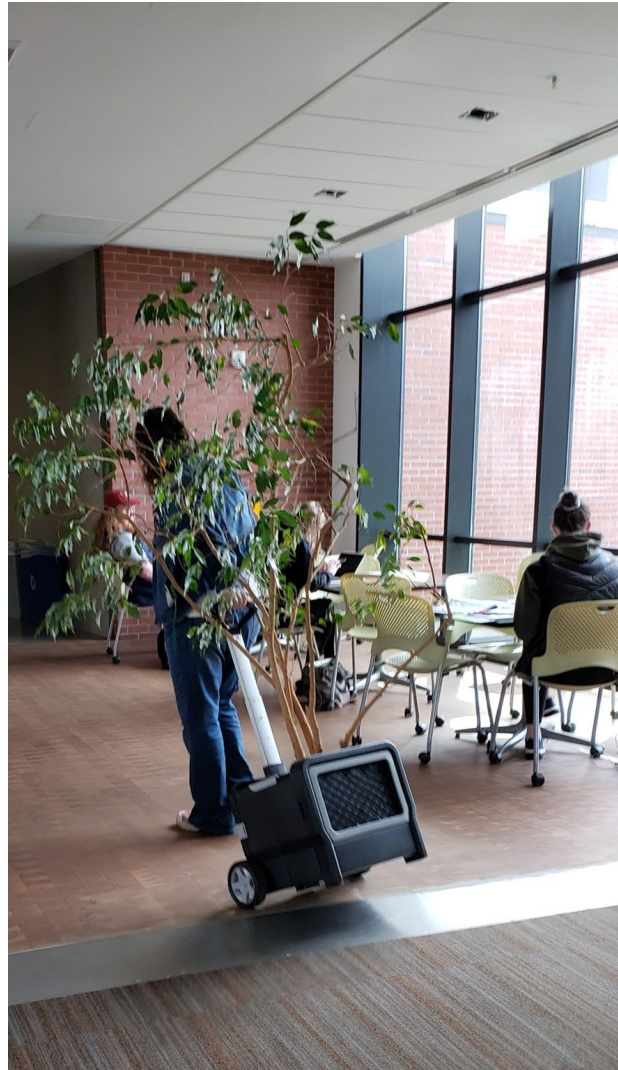


# Before



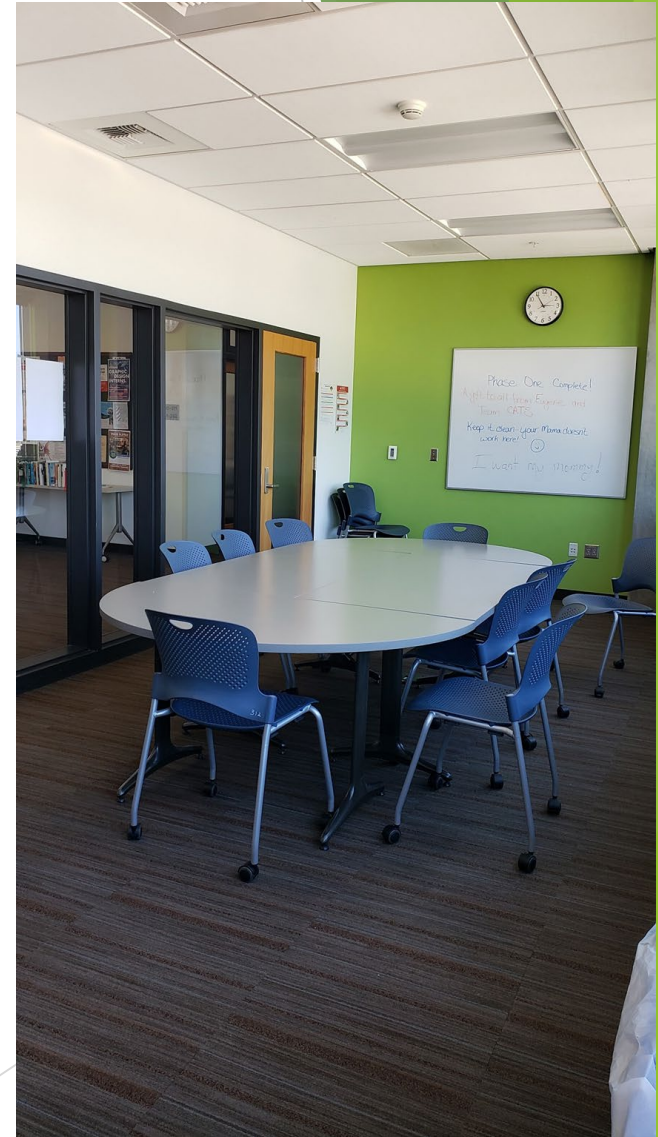
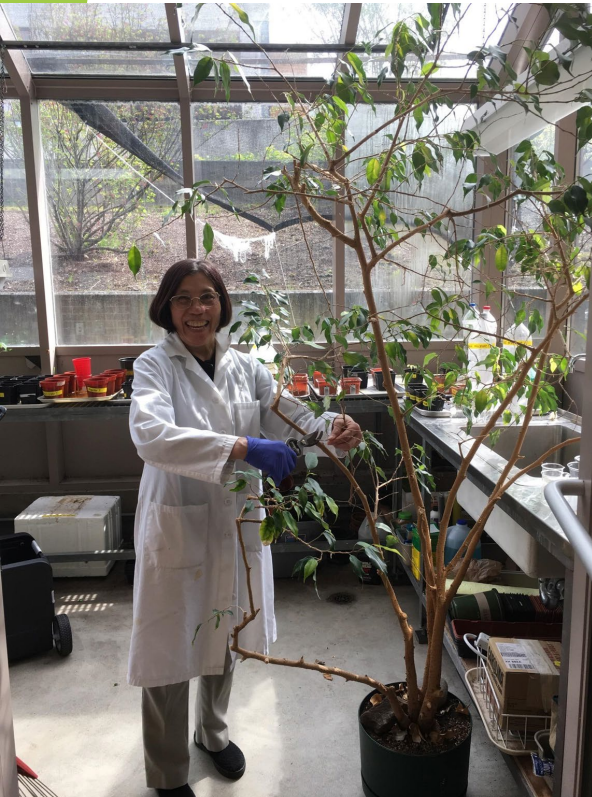


# During

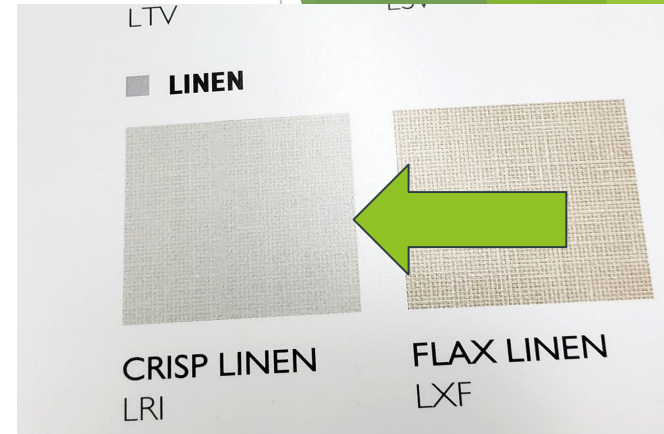
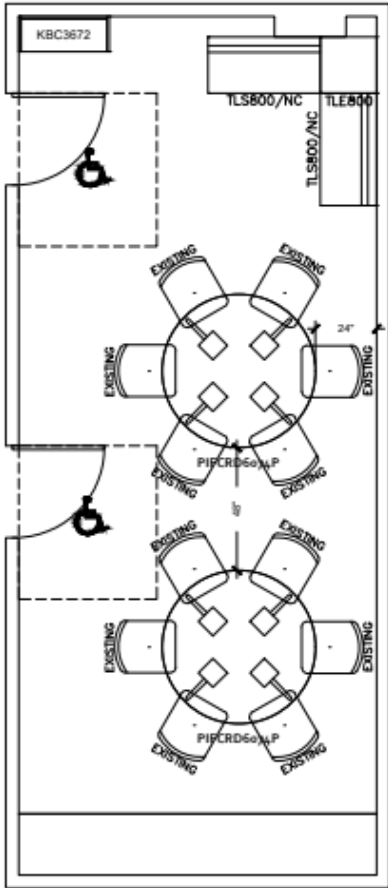




# After



# Phase 2: The Future



# Conclusion

**“It is easier to be a critic  
than a participant”**

**Jason Smith**

We CATS are happy to be counted in the  
participants column!

Special thanks to Pat Sisneros, Cathie  
Wamsley, and Molly Beeman. We could not  
have completed our project without your  
help and support!